

State of Wyoming Corner Record

(In compliance with the CORNER PERPETUATION AND FILING ACT, Wyoming Statutes, 1997 Section 33-29-140, et. seq., and the Rules and Regulations of the Board of Professional Engineers and Professional Land Surveyors)

Reverse side of this form may be used if more space is needed.

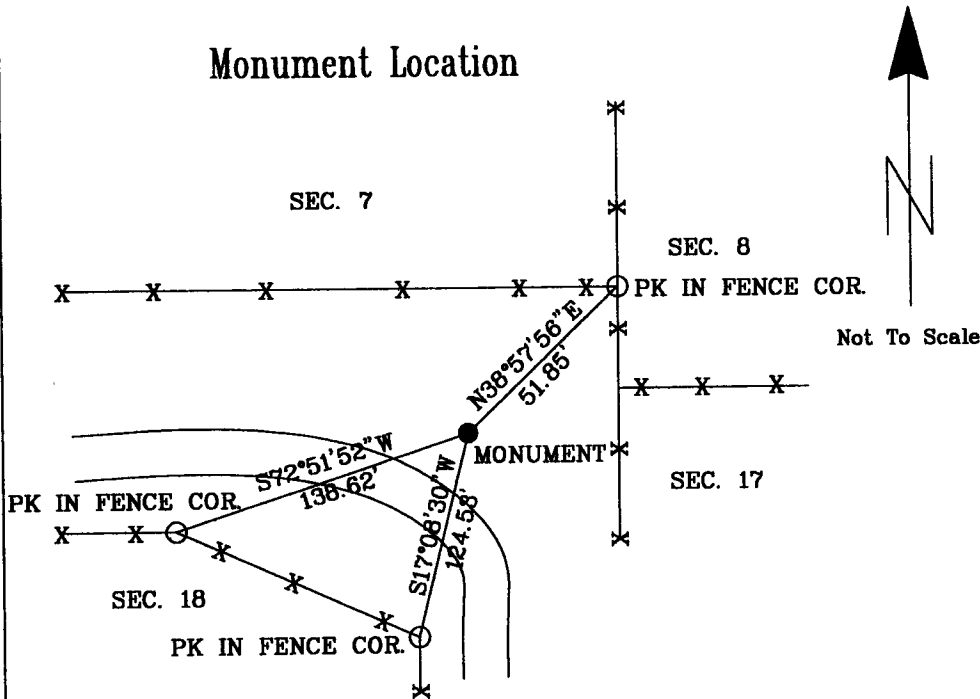
Record of original survey and citation of source of historical information (If corner is lost or obliterated), Description of corner monumentation evidence found and/or monument and accessories established to perpetuate the location of this corner. Sketch of relative location of monument, accessories and reference points with the course and distance to adjacent corner(s) (if determined in this survey). Method and rationale for re-establishment of lost or obliterated corner.

RECORD SHOWS A LIME STONE 16"X16"X4" WAS SET ORIGINALLY, RECOVERED A SPIKE. SET 5/8" REBAR WITH AN ALUMINUM CAP THIS DATE. MONUMENT IS SOUTHWEST OF A NORTH/SOUTH/WEST FENCE CORNER AND NORTHEAST OF A ROAD. SET A PK NAIL FOR A REFERENCE POINT IN 3 FENCE CORNERS.

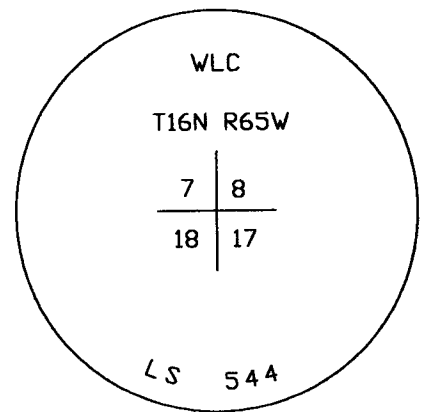
LAT = 41°21'44.828"N

LONG = 104°41'30.06"W

Monument Location



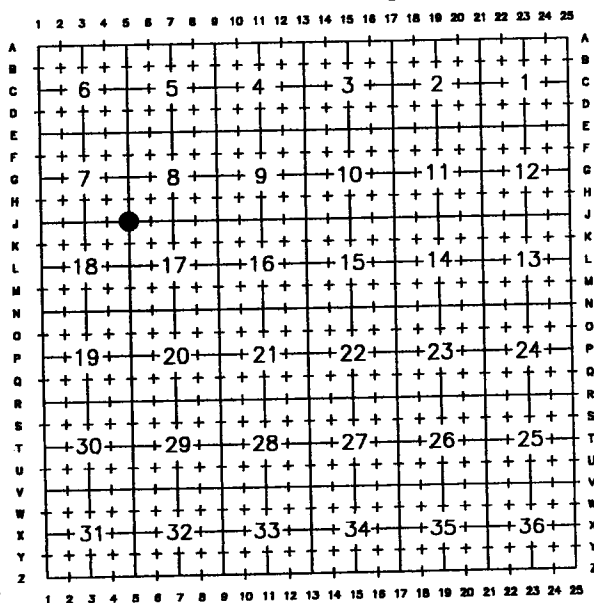
Monument Inscription



LATITUDE AND LONGITUDE NOT REFERENCED TO CORS STATION

Date of Field Work: 10/1/2010 Office Reference: 13985.08

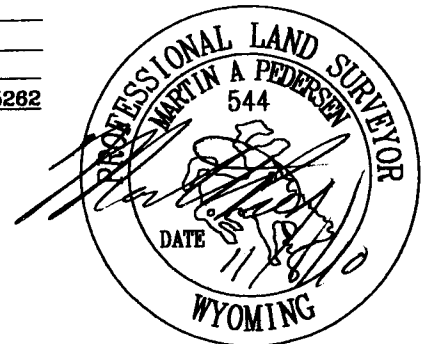
Cross Index Diagram



Firm/Agency, Address

Robert Jack Smith & Associates
1015 Harshman St.
P.O. Box 1104
Rawlins, Wyoming 82301
Telephone Number: (307) 324-5262

This corner record was prepared by me or under my direction and supervision.



RECORDED 11/10/2010 AT 3:45 PM REC# 556952 BK# 2192 PG# 1170
 DEBRA K. LATHROP, CLERK OF LARAMIE COUNTY, WY PAGE 1 OF 1

Corner Name NW Section 18, T 16 N, R 65 W, 6th P.M. Cross-Index No.: J-5
 County: LARAMIE, Wyoming